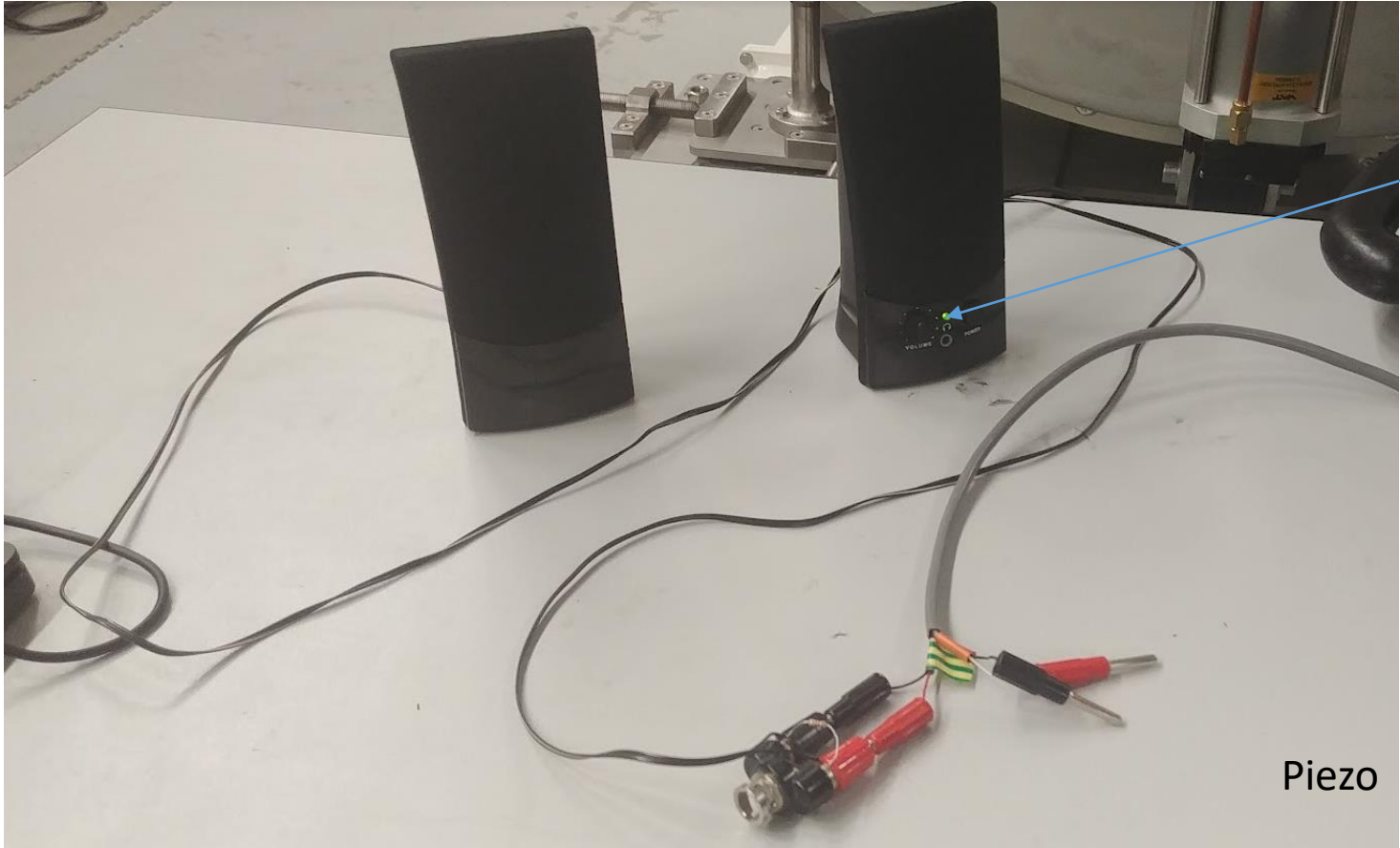


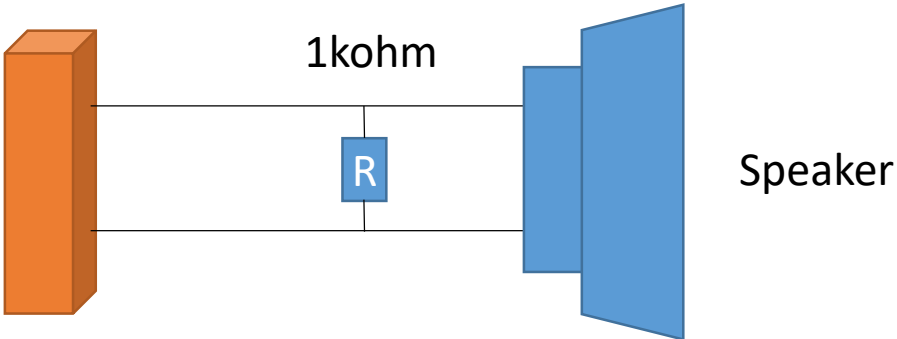
N. Gandolfo  
12-05-2022  
CM Meeting

# Piezo direct listening

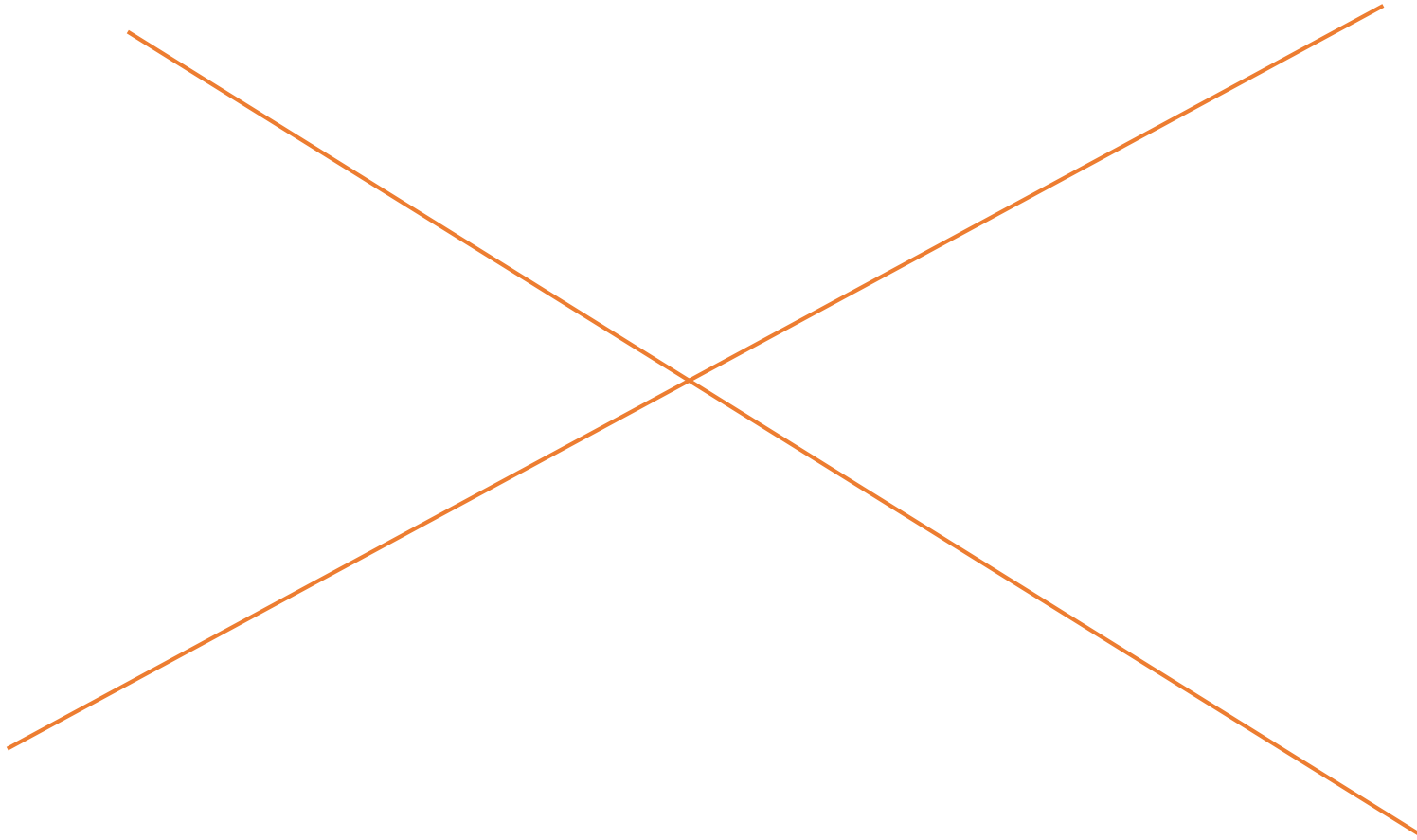


Volume should be ramped to max to hear something clear enough

Pins 1&2 from LC04

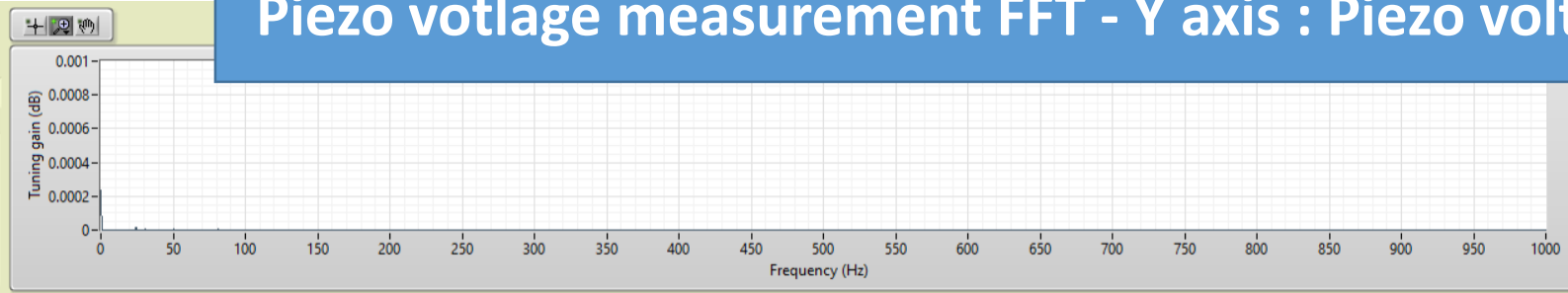


# Videos

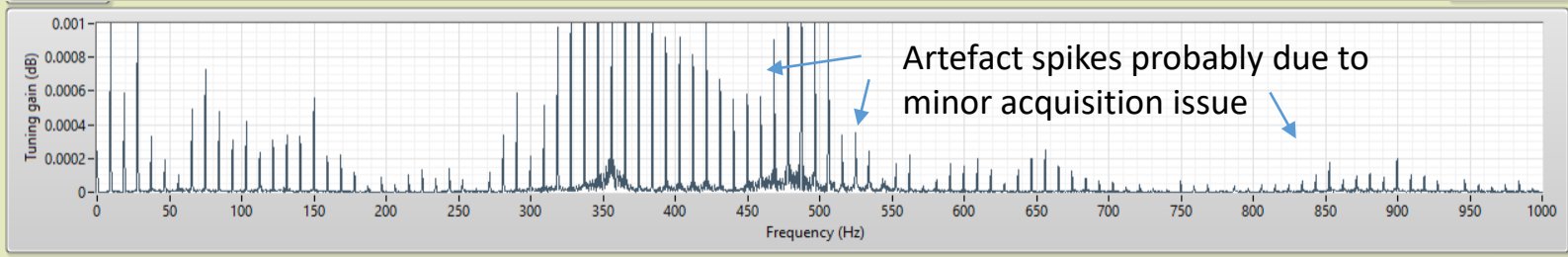


(Externally Attached)

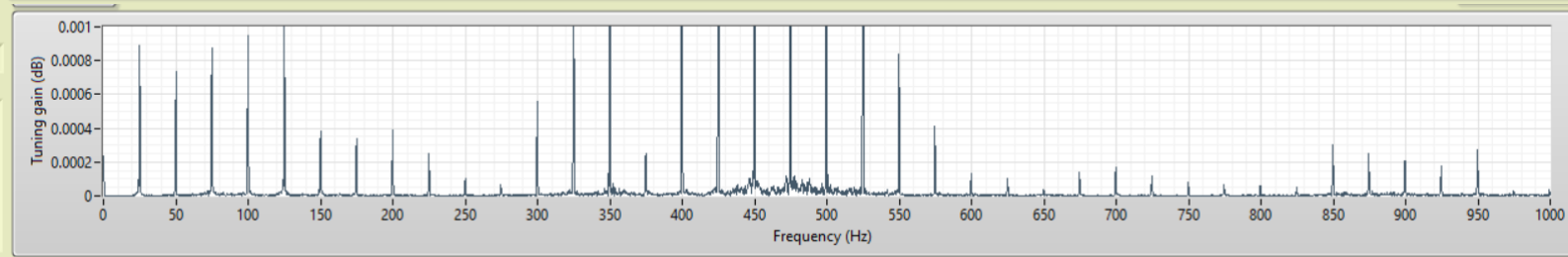
# Piezo voltage measurement FFT - Y axis : Piezo voltage (V) - X axis : Frequency (Hz)



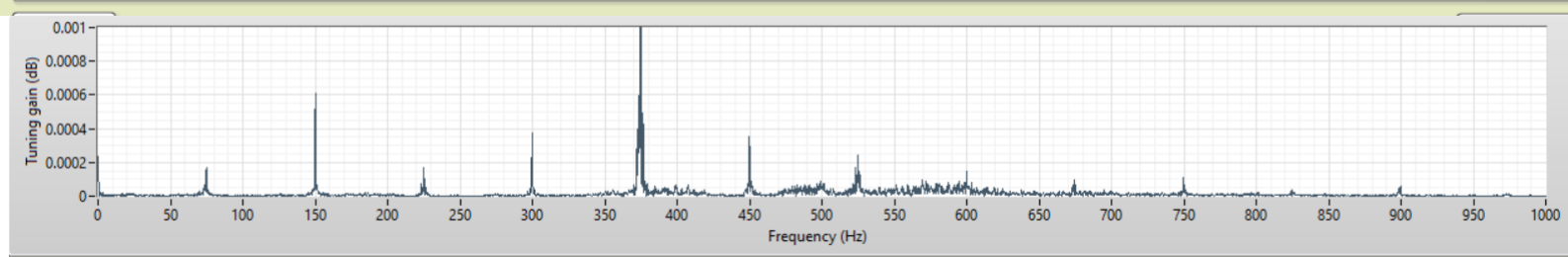
Motor stop



Motor stuck (trying to run against a wall)



Motor run (backward)



Motor run (forward)

