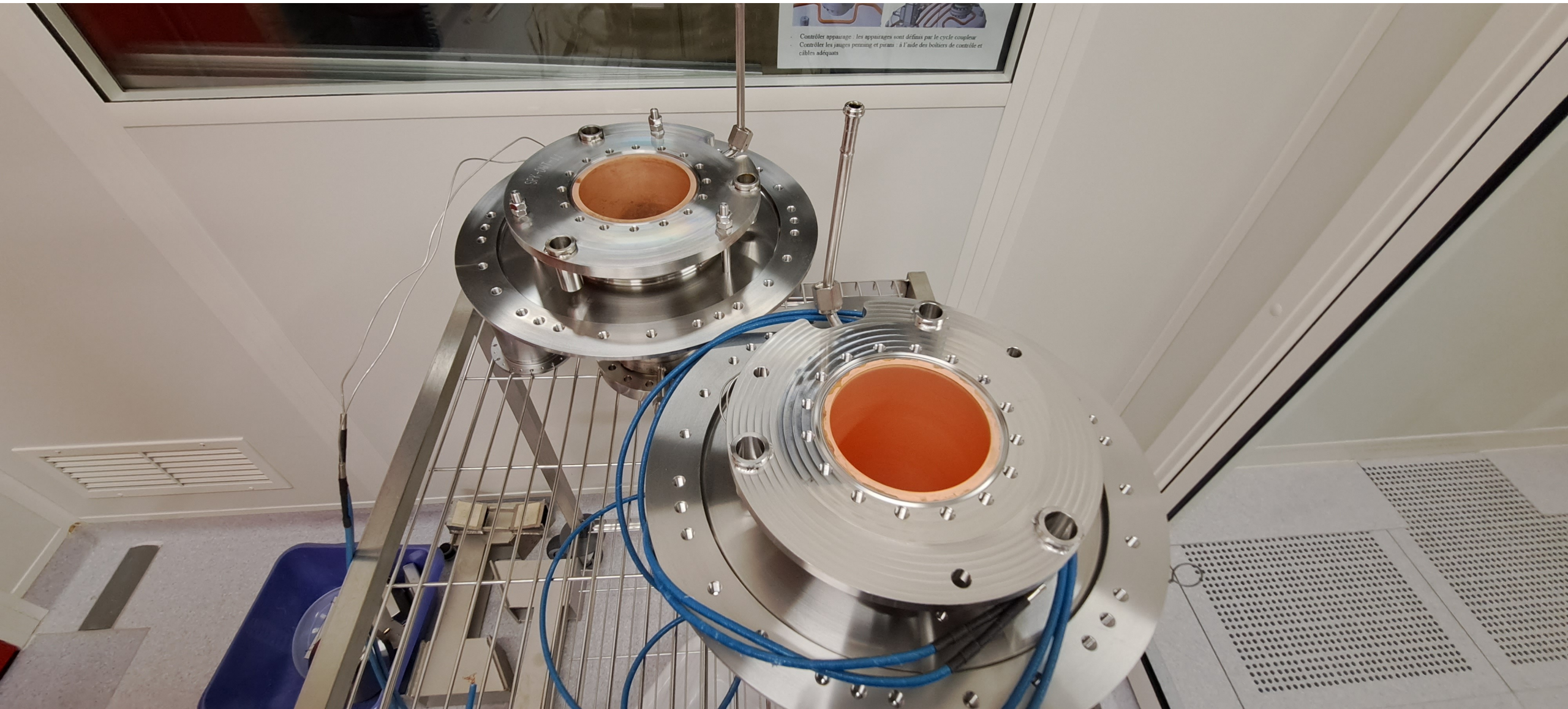


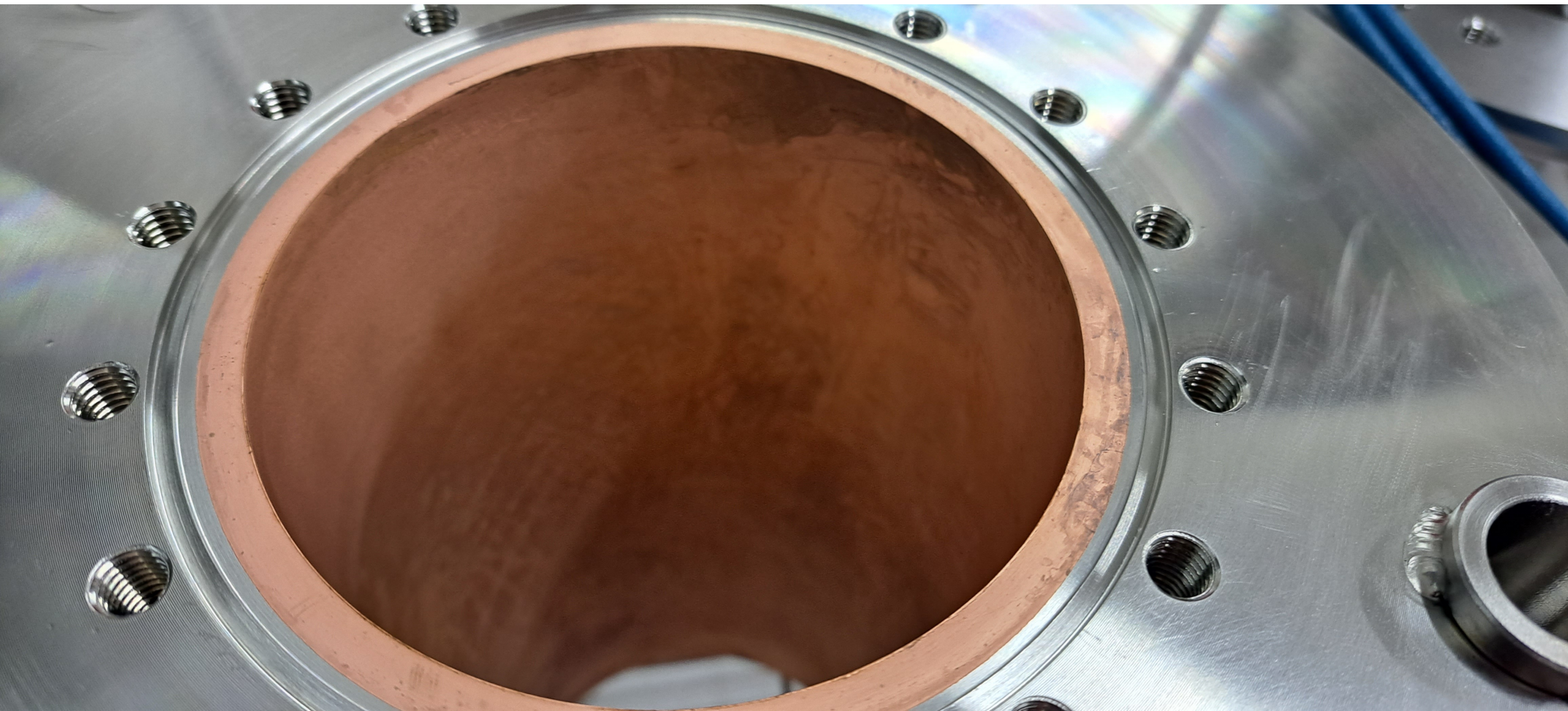
Update on ESS CM14

Akira Miyazaki

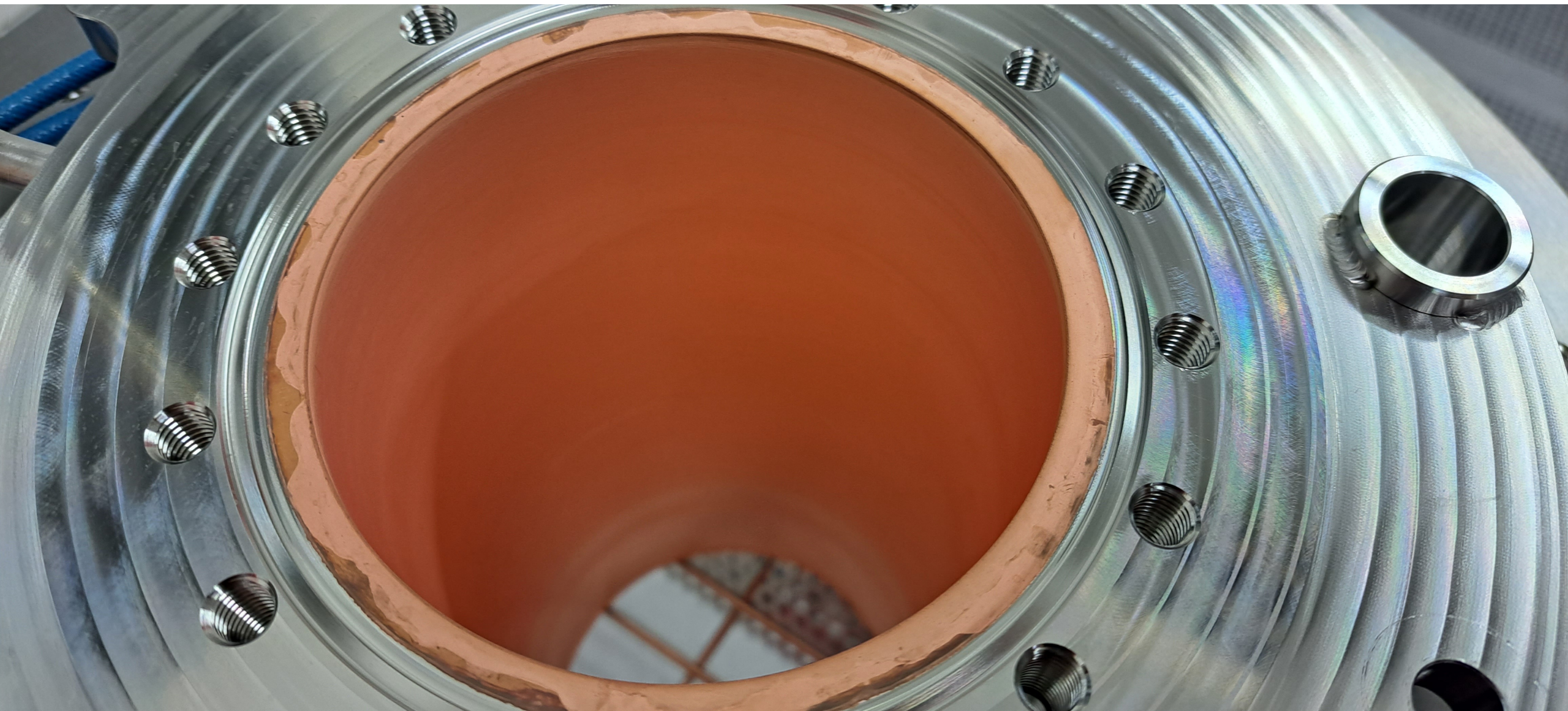
Two double-wall tubes for the CM14 coupler@IJCLab



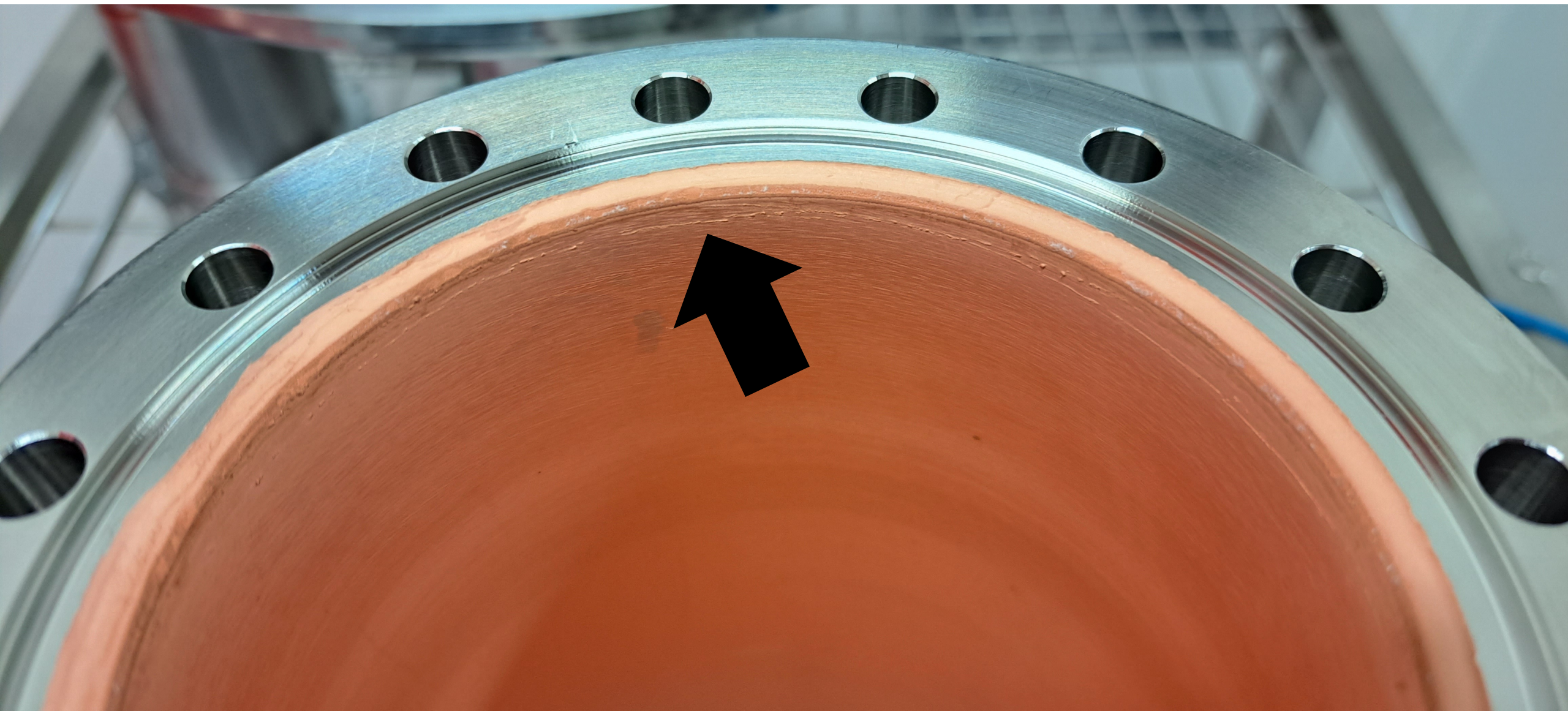
One OK tube



Is the other OK?



Not ☹️



Strategy

- IJCLab sent an old leaky double-wall tube to the company to qualify their Cu plating system (2 weeks)
 - If they successfully coat it, we will send the good one (2 weeks)
 - If the two tubes are ready, we assemble and pre-condition the couplers (2 weeks)
 - Clean room assembly of cavities and the couplers (4 weeks)
 - Assembly outside the clean room for tuners, cryogenics, vacuum vessel (4 weeks)
- 16 weeks = 4 months from now to ship it to FREIA → end of Dec 2023