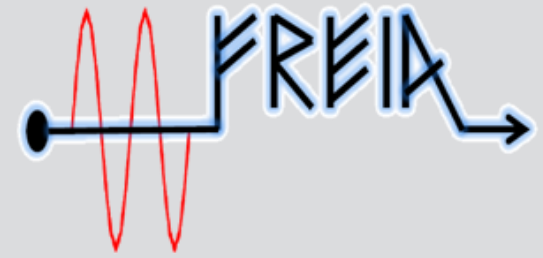




UPPSALA
UNIVERSITET



ESS weekly meeting (W25)

A. Miyazaki et al.

Equipment	Responsible	June					July					August					September					
		24	31	7	14	21	28	5	12	19	26	2	9	16	23	30	6	13	20	27		
		week #	21	22	23	24	25	26	27	28	29	30	31	32	33	34	35	36	37	38	39	
Liquefier	Esat		Blue	Blue												Blue	Blue				Blue	Blue
Cryomodule test stand	Akira		Blue	Blue	Yellow	Yellow	Green									Blue	Yellow	Yellow	Green		Blue	Blue
RF power stations	Mykhailo						Green										Green			Green		Green
	Legend																					
Installation and test			Yellow																			
Operation - warm			Green																			
Operation - cold			Blue																			
Vacation			Grey																			

We are here

We need a **fully** validated motor driver (hardware + software) in W33

Question to ESS and Orsay

- How is the progress of hardware of beckhoff 48V driver?
- Will an ESS expert have time to fully check software at Orsay?
- Plan B: Temporarily borrow Orsay's driver



W25 progress and planning



week	date		CM under test		next CM	next next CM
			CM03	CM01	CM04	
24	MON	14-jun	m	Remove concrete blocks to open the bunker		preparation at Orsay
			a			
	TUE	15-jun	m			
			a			
	WED	16-jun	m	dismount cryogenic lines, RF waveguids, change windows		
			a			
	THU	17-jun	m			
		a				
FRI	18-jun	m	swap modules: docking area			
		a				
SAT	19-jun					
SUN	20-jun					
25	MON	21-jun	m	meeting day		preparation at Orsay
			a			
	TUE	22-jun	m	swap modules: doorknob mounting, swap pumps and cryogenic lines		
			a			
	WED	23-jun	m	dismount doorknob	2 turbo pump + water connection	
			a			
	THU	24-jun	m	fill insulation vacuum by dry N2	RF calibration	
		a				
FRI	25-jun	m	mid summer all day off	Coupler warm conditioning	departure from Orsay	
		a				
SAT	26-jun				over the sea	
SUN	27-jun					
26	MON	28-jun	m	out-going test	cryogenic connection	over the sea
			a			
	TUE	29-jun	m	close the box		
			a			
	WED	30-jun	m	departure	Coupler warm conditioning (if not yet finished)	arrival
			a			
	THU	01-jul	m			thermalization
		a				
FRI	02-jul	m	stop stations			
		a				
SAT	03-jul					
SUN	04-jul					

We are here

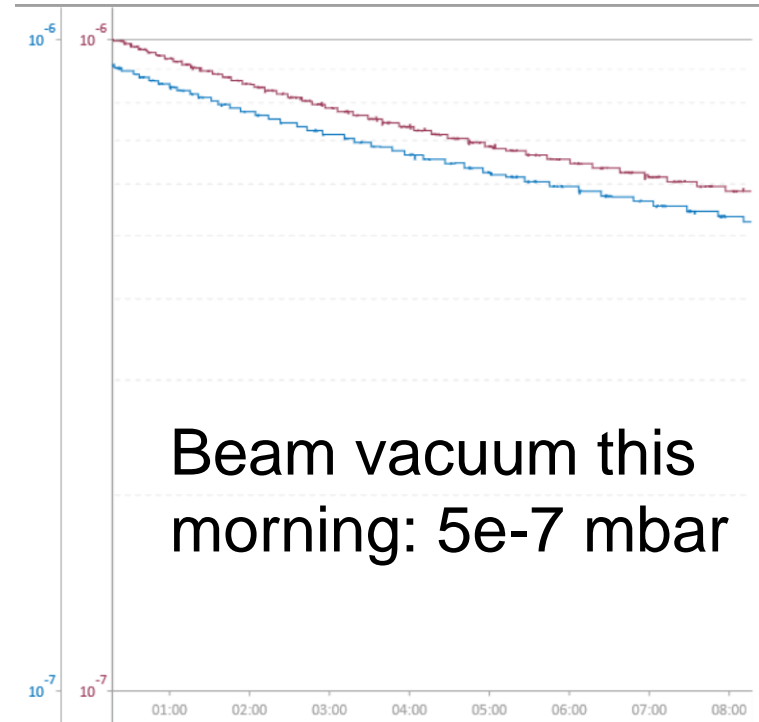
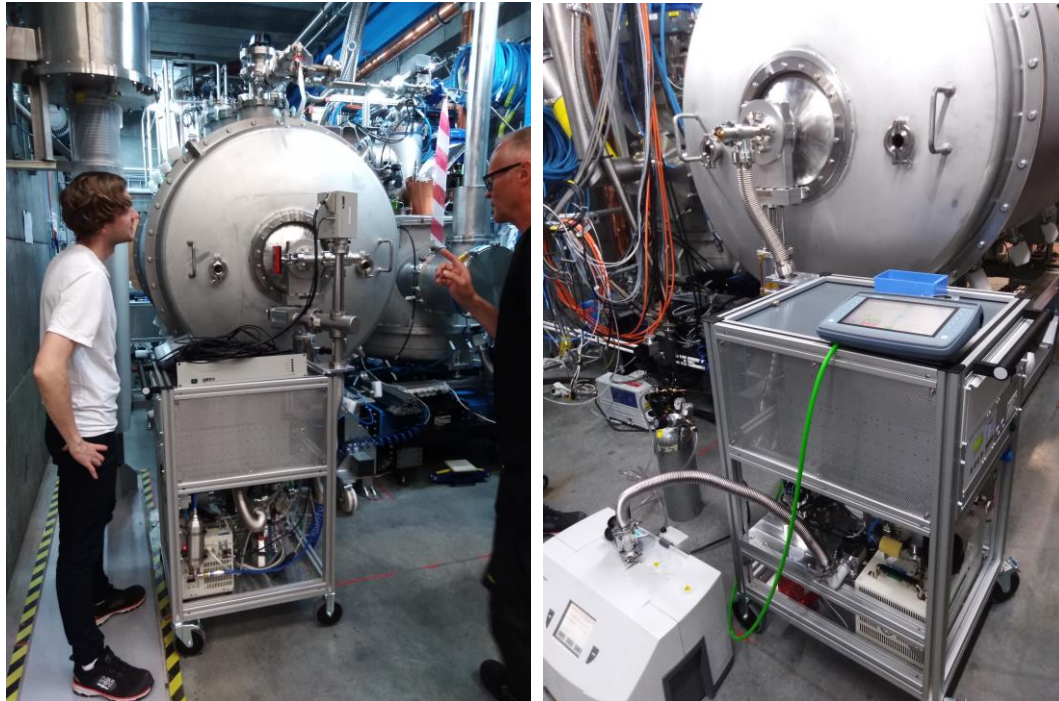
Goal before vacation



- All the components successfully removed
- Outgoing test on next Monday
- We mount ESS's shock sensors this time and Orsay send them back to ESS later



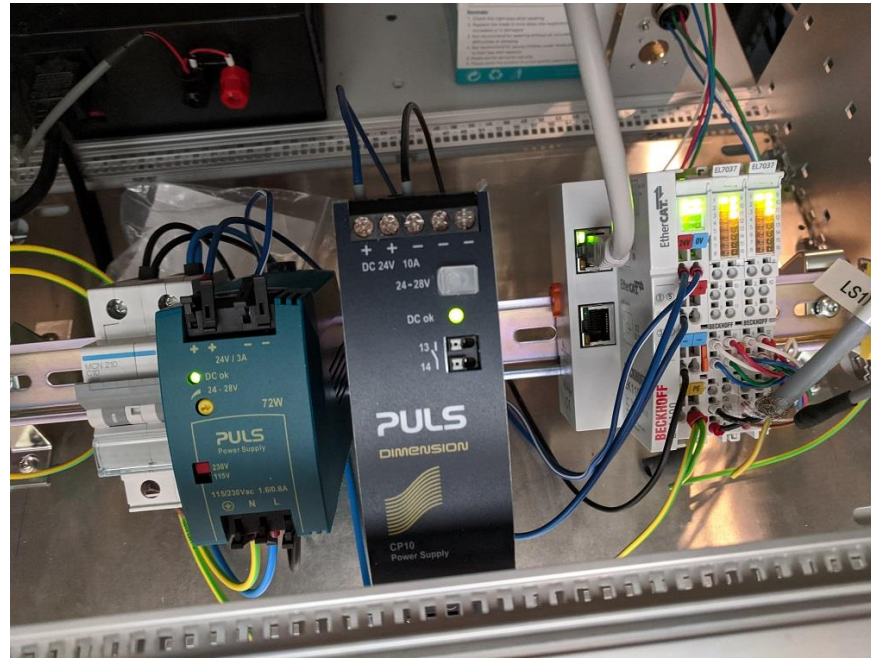
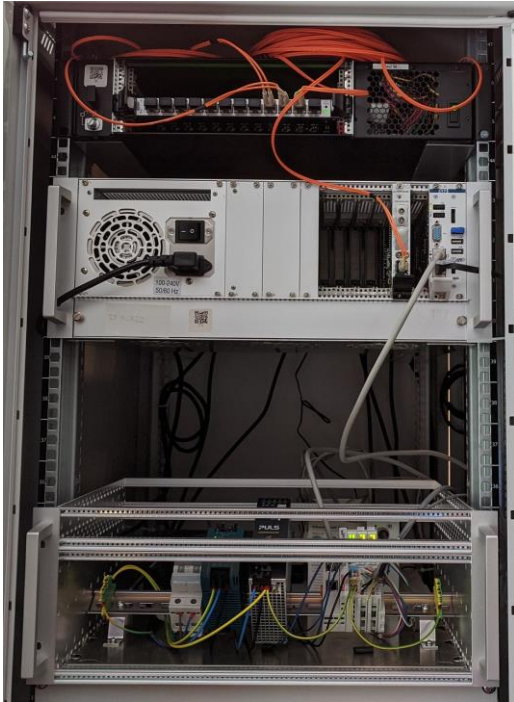
Summary document will be circulated next week



Two TPs → See meeting slides W21
(<https://indico.uu.se/event/913/>)

- The aim is to condition the coupler as much as we can over the long weekend
- We will have other time slot next week

Reminder: Our motor driver 2



Motion Crate could be sent. Compatibility with ESS software? Config file? Cables?

- Beckhoff EtherCat 1100
- 2 EL7037 Beckhoff driver modules
- 24 V power supply

Control crate should not be sent

- Cpci crate controller
- Crate also contains the LLRF timing generator system